



Canine Fecal Occult Blood (FOB) Rapid Testing

Clinical Application Training for Veterinary Professionals

EARLY DETECTION · PRECISION DIAGNOSTICS · GI HEALTH

Training Agenda

01

FOB Basics & Mechanism

What it is and how it works

02

Clinical Indications

When and why to use FOB testing

03

Screening Workflow

Step-by-step sample flow

04

Result Interpretation

Reading results and next steps

05

Troubleshooting & Case Study

Common pitfalls and real-world application



HOW IT WORKS

FOB: Principle & Mechanism

The FOB rapid test uses **immunochemical sandwich assay** technology to detect canine hemoglobin in fecal samples.

Target

Canine hemoglobin in stool

Sensitivity

200 ng/mL

Time to Result

5–10 minutes

Why FOB Matters: Clinical Significance

Invisible Bleeding

Detects microscopic blood undetectable by the naked eye

Early Warning

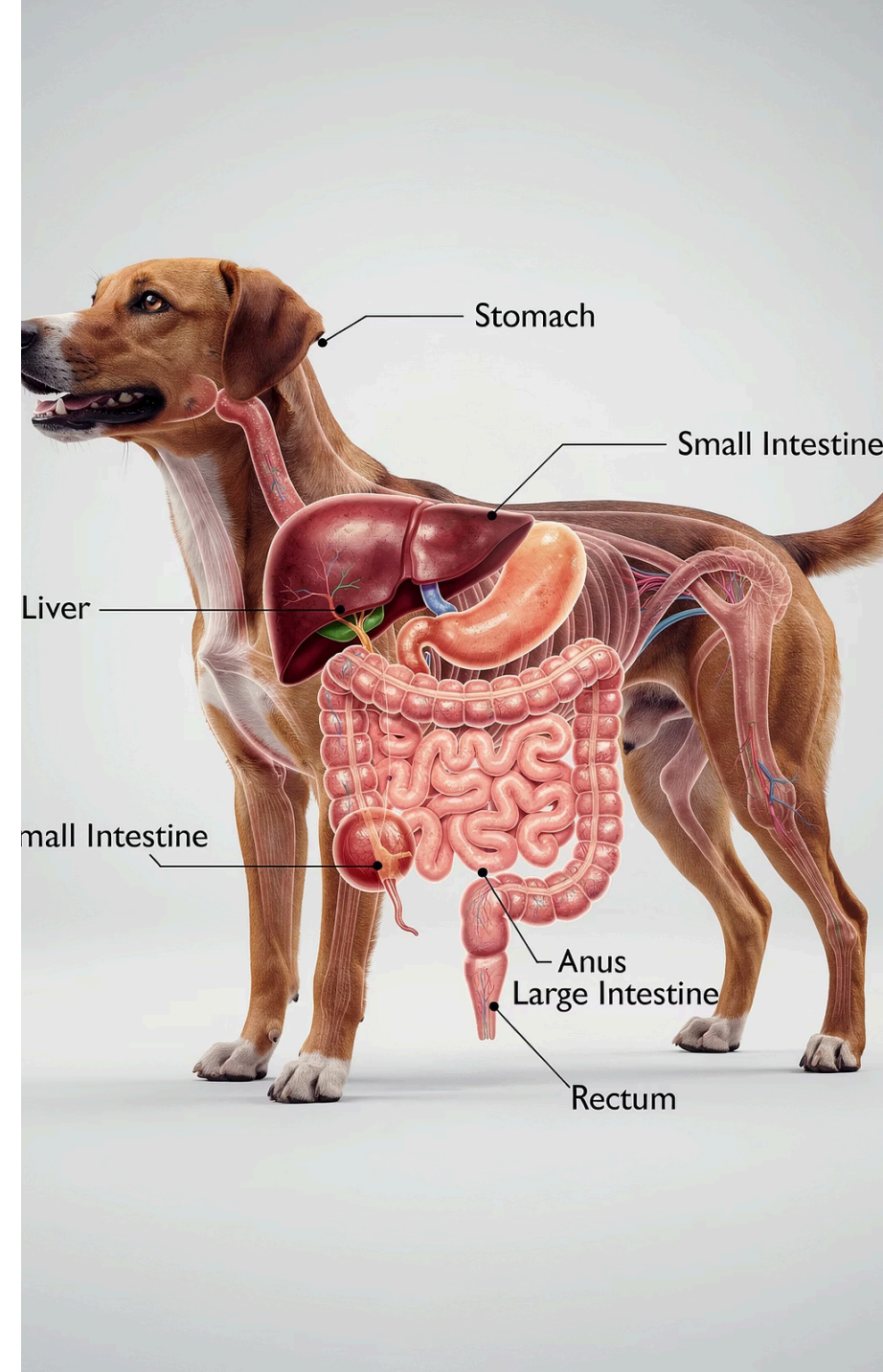
Flags colorectal tumors, polyps, and ulcers at early stages

Bleed Localization

Helps differentiate upper vs. lower GI bleeding

Treatment Monitoring

Track GI healing and therapy response over time



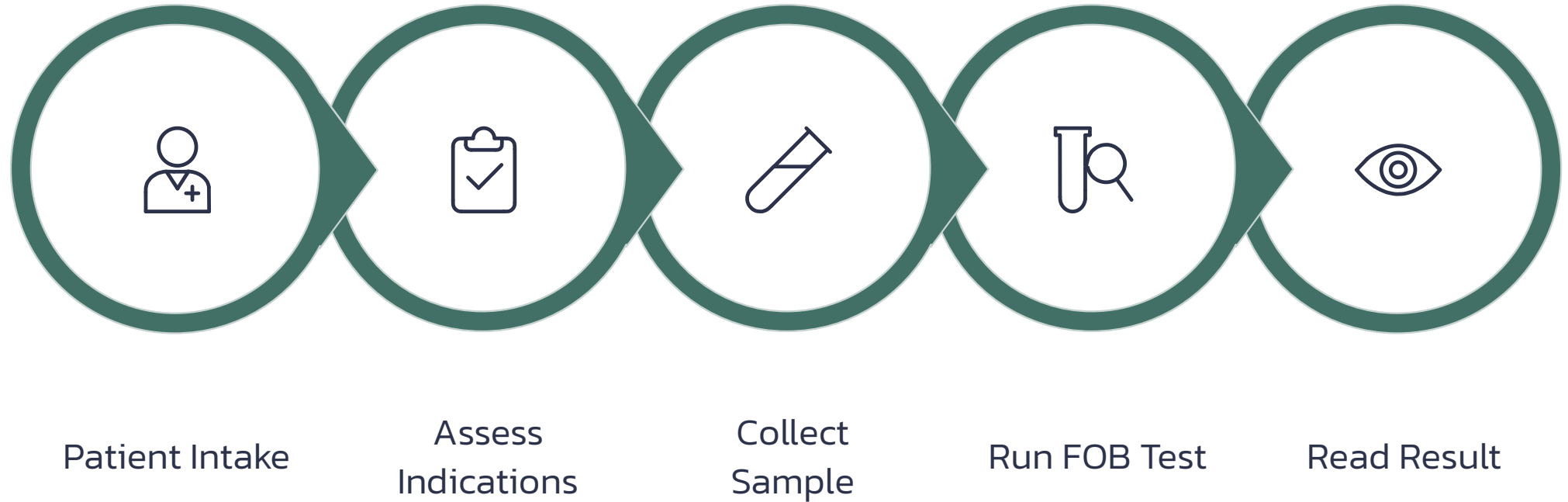
When Should You Test? — Clinical Indications

Clinical Situation	Recommendation
Intermittent vomiting / diarrhea	★★★ Strong
Melena / hematochezia	★★★ Strong
Weight loss / anemia	★★★ Strong
Senior dog wellness exam	★★ Recommended
Long-term NSAID use	★★ Recommended
Pre-surgical assessment	★ Consider

Clinical Tip

FOB testing should be a **routine screening step** for any dog with unexplained GI signs — early detection changes outcomes.

FOB Screening Workflow



i If melena is present and result is negative, dilute the sample 50–100× and retest — high hemoglobin concentration may cause a hook effect.

Operational Key Points

1 Sample Collection

Rectal sampling preferred;
ground sample acceptable as
secondary option

2 Sample Prep

Mix thoroughly in buffer solution
to ensure homogeneous
suspension

3 Loading Volume

Apply exactly 3 drops (~100 μ L)
into the sample well

4 Reading Window


Interpret results strictly at 5–10
minutes – do not read after



⊗ Do NOT freeze samples · Do NOT mix lot numbers · Do NOT read results after 10 minutes

Result Interpretation & Clinical Decision

Result	T Line	C Line	Recommended Action
Positive	✔ Present	✔ Present	Ultrasound / endoscopy / parasite screening
Negative	✘ Absent	✔ Present	If signs persist: dilute & retest, or pursue imaging
Invalid	Any	✘ Absent	Discard and repeat with a new test strip

 A valid result always requires the **Control (C) line** to appear, regardless of the test outcome.

FOB in Action: Golden Retriever



1

Presentation

8-year-old Golden Retriever;
gradual weight loss over 2
months; stool appears
visually normal

2

FOB Test

Routine FOB screening
performed – result returned
positive

3

Imaging Follow-up

Abdominal ultrasound
revealed a **colonic polyp** –
not visible on physical exam

4

Outcome

Early surgical intervention
performed successfully. **FOB
enabled detection that
would otherwise have been
missed.**

PRODUCT INFORMATION

Specifications & Storage

Pack Size

10 tests per box

Storage Temp

2°C – 30°C

Shelf Life

24 months

⊗ Do NOT freeze. Do NOT mix test strips from different lot numbers – results may be unreliable.



Questions & Contact

Thank you for attending today's FOB clinical training. We're here to support your practice.

Open Q&A

Submit your questions now — our clinical team is ready to answer

Technical Support

Reach out to your product representative for operational assistance

Training Materials

Printed workflow charts and result reference guides available on request

